



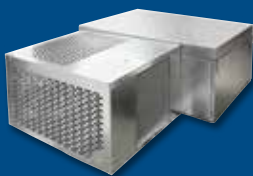
KOLD LOCKER™

Walk-In Coolers & Freezers

With Self-Contained Refrigeration Systems



Equipped with
**SELF-CONTAINED
CAPSULE PAK ECO™**
Refrigeration Systems
Featuring R290 Refrigerant



FEATURES

- Available widths: 6', 8' and 10'
- Available depths: 6', 8', 10', 12' and 14' (10x14 freezer models ship with a remote Split-Pak™ refrigeration system and require additional installation)
- Available heights: 7'7" with floor, 7'4" less floor
- Door width options: 26", 30" or 36"
- Indoor or outdoor model coolers and freezers
- Two temperatures: +37°F, -10°F
- Ceiling mount Capsule Pak ECO refrigeration system
- LogiTemp® electronic controller system
- 26 gauge corrosion resistant stucco embossed coated steel on all surfaces except interior floor
- Smooth aluminum interior floor (on models with floor)
- Floorless models supplied with NSF listed vinyl sealers
- Full 4" thick panels foamed-in-place with EPA-compliant polyurethane insulation
- Heavy duty adjustable cam-lift hinges
- Spring actuated door closer
- Deadbolt locking handle with independent key/padlock feature and inside safety release
- Magnetic gasket
- Digital thermometer and light switch
- Floor double sweep gasket
- Perimeter door heater wire
- High output low profile LED light positioned above the door to prevent interference with shelving or product
- UL and C-UL listing on complete Capsule Pak ECO refrigeration systems*
- UL NCKL listed certifying compliant walk-ins are ignition protected
- NSF listed, UL flame spread 25 or less on all foam cores; UL electrical listing on door sections
- City of Houston listed
- California State listed
- CN UL flame spread listed
- DOE compliant
- Oregon State listed
- USDA accepted
- 15 year panel warranty and 18 months parts & labor warranty
- Indoor models feature hot gas or wick condensate vaporizer
- Outdoor models:
 - White membrane roof and trim
 - -20°F ambient controls
 - Outdoor cooler model refrigeration systems feature a heater to prevent product loss in low ambient conditions

OPTIONS

(Most options available two weeks from receipt of order.
Please contact us for specific questions.)

- ☐ U-shaped shelving system
- ☐ Floor tread plate kit
- ☐ Exterior ramp
- ☐ Door hood (outdoor models)
- ☐ Leak detector/alarm (may be a requirement in some areas)
- ☐ Electric vaporizer (indoor models only)
- ☐ Five year compressor warranty

* C-UL is Underwriters Laboratories Safety Certification Mark which indicates that UL has tested the equipment to applicable CSA Standards.



WALK-IN SPECIFICATIONS

Kold Locker walk-ins are built of modular panels and are insulated with foamed-in-place EPA-compliant polyurethane insulation. Each panel is designed to ensure ease of installation, long term reliability and high insulating efficiency.

A. All panels are manufactured with male and female mating rails to ensure proper alignment during installation. The polyurethane insulation wraps around the return bend metal seams on both section to create a lightweight panel of exceptional strength and durability. All panels are a full four (4) inches thick and provide a superior insulating value.

B. The foamed-in-place cam locking fasteners ensure an airtight seal for maximum energy efficiency.

C. Panel gaskets located around the outer perimeter of the panel are continuous, without cuts or breaks at corners. Because gaskets are foamed-in-place as an integral part of the panel, they cannot fall off or pull off during shipment or installation.

D. Panels lock together tightly for an energy efficient walk-in.

E. Edge caps for ends of floor and ceiling panels are foamed-in-place rather than overlapped or mechanically fastened. Edge caps cannot come loose, and they stay in place through the life of the walk-in.

F. Panel Finishes: Interior and exterior panels are fabricated with 26 gauge corrosion resistant stucco embossed coated steel. Models supplied with a floor will include a smooth aluminum interior floor surface.

G. Insulation: Panels are four (4) inches thick, metal clad and foamed-in-place with HFO polyurethane insulation which is HFC free.

The minimum R-values for 4" HFO panels are:

Cooler:

Walls/Ceilings R-value 25

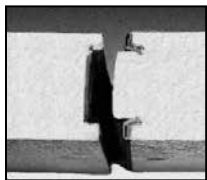
Doors R-value 25

Freezer:

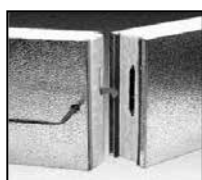
Walls/Ceilings R-value 32

Doors R-value 32

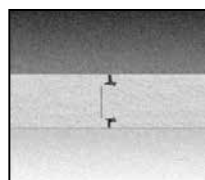
Floors R-value 28



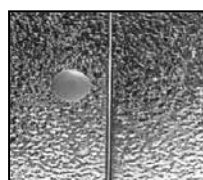
A.



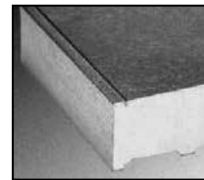
B.



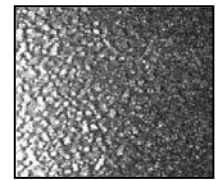
C.



D.



E.



F.

AVAILABLE SIZES

The 77 Series of Kold Locker walk-ins are all 7'7" high and are all supplied with a floor. The 74 Series of Kold Locker walk-ins are all 7'3⁵/₈" high and are all supplied without a floor. Wall panels are installed on top of NSF listed vinyl sealers provided.

The sizes available for both 77 and 74 series:

WIDTH (FT.)	LENGTH (FT.)
6	6
6	8
6	10
6	12
6	14
8	6
8	8
8	10
8	12
8	14

WIDTH (FT.)	LENGTH (FT.)
10	6
10	8
10	10
10	12
10	14

OUTDOOR MODELS

All Kold Locker walk-ins installed outdoors include a weather protection kit consisting of a one-piece, 35 mill, white membrane roof material which requires no seaming or gluing to the top of the Kold Locker walk-in ceiling panels.

Metal trim for flashing the membrane roof material to the side of the Kold Locker walk-in wall panels is included.

Trim is secured to the Kold Locker wall panels with self-drilling and self-tapping TEK screws. In applications where the Kold Locker walk-in is installed next to a building, the trim can be used to secure the turned up membrane roof material to the building wall, with fasteners supplied. Door rain hoods are an option and should be included on installations where the door panels are exposed to the outdoor weather.



DOOR CONSTRUCTION

Door sections are factory tested to assure proper fit, performance and alignment. All doors feature a stepped profile design that serves as a barrier to air flow which results in an energy efficient door system. Door sections are 4" thick, metal clad and foamed-in-place with EPA-compliant polyurethane insulation.

Each Kold Locker walk-in compartment is equipped with a standard 26"W x 78"H door opening. Widths of 30" and 36" are also available.

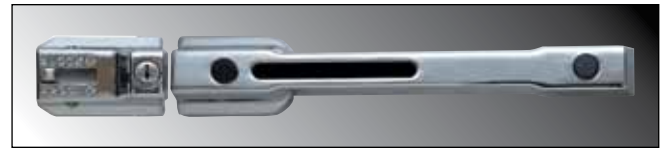
The door is self-closing, flush mounted, infitting and constructed to incorporate heavy duty, molded ABS breaker which is permanently foamed-in-place.

Doors are available with right or left side hinges and include two field adjustable cam-lift hinges with locking set screw, top hinge spring loaded, spring actuated door closer, NL 9800 deadbolt locking handle with independent key/padlock feature and inside safety release. The doors are pre-hung in a four foot wide frame panel which is equipped with replaceable perimeter heater wire, magnetic stainless steel trim, digital thermometer, vapor proof LED light fixture and switch with exterior pilot indicator light.

The door section is completely pre-wired within concealed conduit inside the door frame panel. 120/60/1 electrical is field wired to a junction box which is surface mounted next to the interior frame above the vapor proof LED light fixture.

Hinges and door handle are mounted to heavy-duty tapping plates. Each door section is complete with a fiberglass reinforced plastic heated threshold.

DOOR OPENING SIZE		
W	H	MODEL
26"	78"	74 Series
26"	78"	77 Series



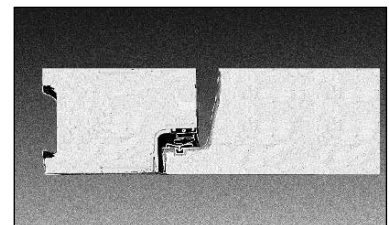
Deadbolt-locking handle



Spring actuated door closer



LED light fixture



Doors feature a stepped profile design



Digital thermometer/light switch

These doors are designed and certified for use in walk-in cooler applications.

DOOR MODEL NUMBER	ENERGY CONSUMPTION (KWH/DAY)	DOOR SURFACE AREA (SQ. FT.)	ELECTRICAL	WATTS	AMPS
KL26X78	2.49	15.80	120/60/1	106.07	0.88

These doors are designed and certified for use in walk-in freezer applications.

DOOR MODEL NUMBER	ENERGY CONSUMPTION (KWH/DAY)	DOOR SURFACE AREA (SQ. FT.)	ELECTRICAL	WATTS	AMPS
KL26X78	7.01	15.80	120/60/1	207.07	1.73



FLOOR CONSTRUCTION

Floor panels (when supplied) are similar in construction to the wall panels except they are made to withstand uniformly distributed floor loads of up to 800 pounds per square foot. The interior floor metal is smooth aluminum.

The 74 Series, floorless models, are supplied with a patented vinyl floor sealer to stop conductivity at floor level. This unique sealer sits flat on existing floors and fits tightly against the interior/exterior wall panels. The walk-in wall panel is supported on the shoulder of the sealer so the foam edge is free of compressing weight. The vinyl floor sealer is NSF listed.

SHELVING KITS

Shelving kits specifically designed for each Kold Locker walk-in configuration are offered as an optional extra. These kits are shipped with the Kold Locker walk-in and Capsule Pak ECO refrigeration system so that all necessary components are at your location promptly when you need them. The shelving sets are coded to correspond to the Kold Locker walk-in configuration ordered and are offered in either three or four tier.

SHELVING SYSTEM TYPES

A. Green Kote™ Shelving: Electrostatically applied green baked epoxy over zinc steel and brite basic wire. Thickness: 2-3 mill. 15 year guarantee against corrosion.

B. Standard Chrome Kote™ Shelving: Plated quality wire and steel. Surface nickel chrome plated.

Select the shelving finish of your choice. Shelving posts are engineered for maximum strength. Shelves are adjustable on 2" centers. All shelves are NSF listed and are zinc coated with a heavy layer of Protoxy for a maximum life span under humid storage conditions. Special clips are utilized to gain the maximum square footage of storage space for each Kold Locker model. 14", 18" and 24" wide shelves are used as required for maximum storage capacity in each set. This wire shelving is ideal for storage of all refrigerated or frozen products.

SHELVES

Shelves to have #9 (.148") ga. crosswires spaced 3/4" on centers with crossbraces 1/4" (.192") minimum of 4-3/4" on center.

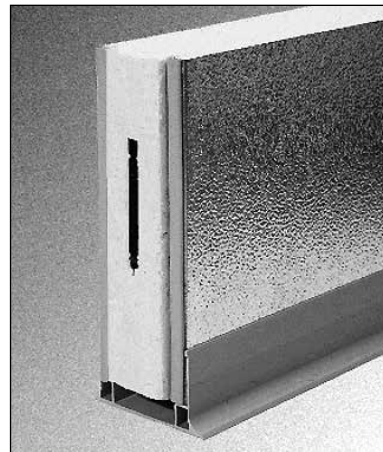
- **Shelf Frames:** Channel to be 9/16" x 1" x .075" thick.
- **Shelf Collars:** A round tapered 1-5/16" high steel collar to be welded at each corner.

POSTS

Posts to be .062" thick 1" O.D. round tubing notched every 2" on each corner of the post.

POST LEVELERS

Installed on the bottom of each post is nylon housing for a steel leveler 3/8"-16 x 1-3/4".

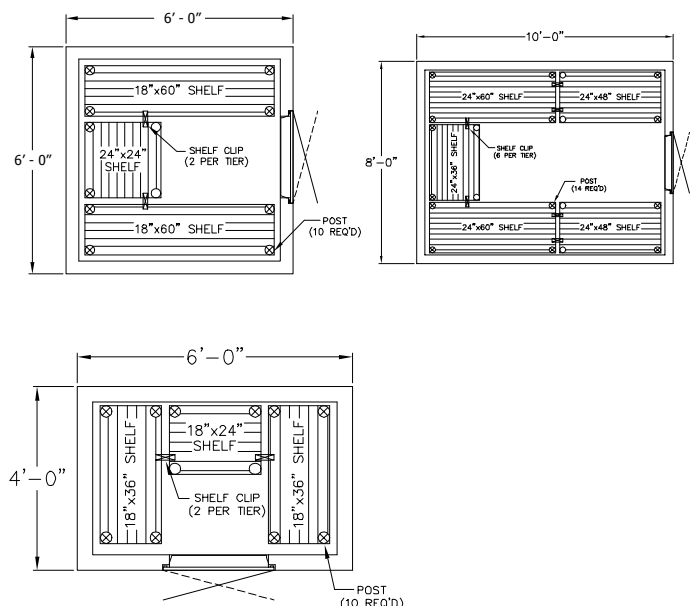


Floorless models are supplied with a patented vinyl floor sealer



Shelving system types include Green Kote™ and Chrome Kote™

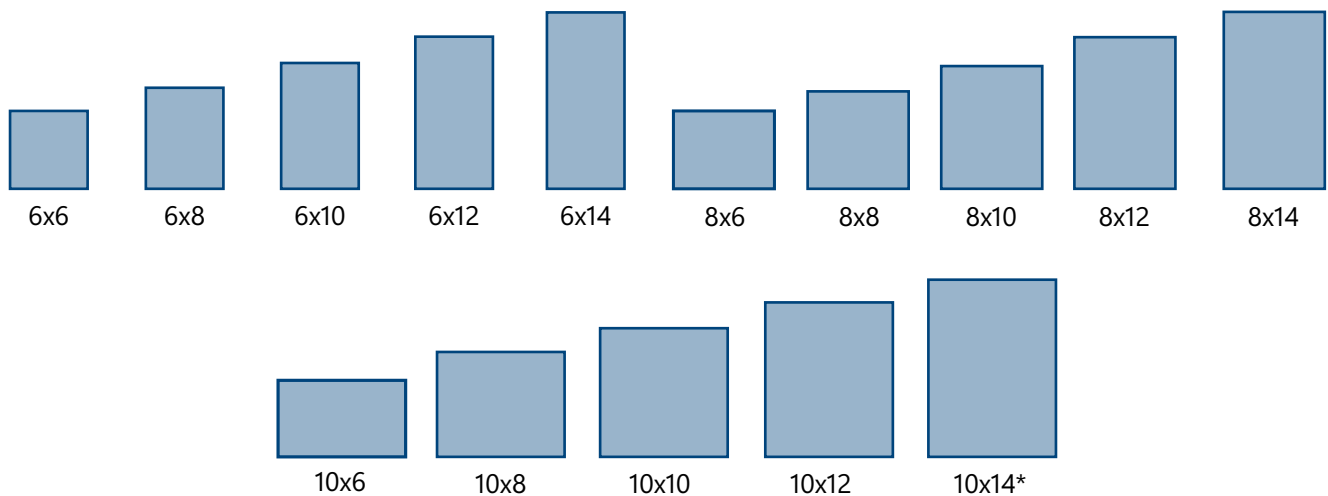
Typical shelf layout plans





FLOOR PLAN LAYOUTS FOR SINGLE ROOM COOLERS OR FREEZERS

Door frame panels are interchangeable with any wall panel of the same four foot width, providing over 14,000 configurations to choose from.



*10 x 14 freezer models ship with dual Capsule Pak ECO systems.

PHYSICAL SPECIFICATIONS

7'4" HIGH & 7'7" HIGH	
MODEL	CAPACITY CU. FT.
KL66 (6' x 6')	196
KL68 (6' x 8')	270
KL610 (6' x 10')	344
KL612 (6' x 12')	418
KL614 (6' x 14')	490
KL88 (8' x 8')	372
KL810 (8' x 10')	473
KL812 (8' x 12')	574
KL814 (8' x 14')	675
KL1010 (10' x 10')	602
KL1012 (10' x 12')	731
KL1014 (10' x 14')	860



KOLD LOCKER™

WALK-IN COOLERS & FREEZERS WITH SELF-CONTAINED REFRIGERATION SYSTEMS

STANDARD SELF-CONTAINED CAPSULE PAK ECO™ REFRIGERATION SYSTEMS



Indoor System



Outdoor System



R290
ECO-FRIENDLY
NATURAL REFRIGERANT



PATENTED
TECHNOLOGY
U.S. Patent No. 11,859,885

FEATURES

- Condensing unit and evaporator coil contained in a single housing ready to mount on top of your Norlake walk-in
- Indoor and outdoor ceiling mount models
- Available for coolers or freezers
- Systems may be specified for walk-in rooms 14' long and under (excluding 10' x 14' freezers)
- Two temperatures: +37°F and -10°F
- Air cooled condensing unit
- Automatic condensate evaporator on indoor systems
- LogiTemp® electronic controller system
- Electronic control provided for automatic defrost on both coolers and freezers
- All models feature standard cord and plug eliminating the need for field connection
- Outdoor coolers incorporate a patent pending heater design for low ambient conditions to keep walk-in temperatures at the set point
- UL and C-UL electrical listing on complete Capsule Pak ECO refrigeration systems*
- DOE, CARB and SNAP compliant
- 18 months parts and labor warranty (optional 5 year compressor warranty available)

STANDARD LOGITEMP® ELECTRONIC CONTROLLER



- More precise and reliable temperature control compared to all-mechanical systems
- Digital readout and four button overlay for easy setup and navigation
- Demand Defrost technology that initiates defrosts only as needed for further energy savings (optional on Capsule Pak ECO cooler models)
- LogiTemp provides online data for instant notification of error codes and settings (standard feature on outdoor systems, optional on indoor)

* C-UL is Underwriters Laboratories Safety Certification Mark which indicates that UL has tested the equipment to applicable CSA Standards.

CAPSULE PAK ECO™ REFRIGERATION SYSTEM SPECIFICATIONS

Capsule Pak ECO™ refrigeration systems consist of a single assembly pre-charged condensing unit and evaporator coil factory assembled, wired, tested and ready for insertion into a factory prepared walk-in ceiling opening. All systems are UL and C-UL listed and DOE compliant.

Capsule Pak ECO systems are ceiling mount and available for indoor or outdoor installations. Models are available for interior compartment design temperatures of +37°F and -10°F. Installation is fast and easy with no plumbing required on indoor units.

A flush evaporator coil keeps all components outside the walk-in storage area allowing more storage inside. The

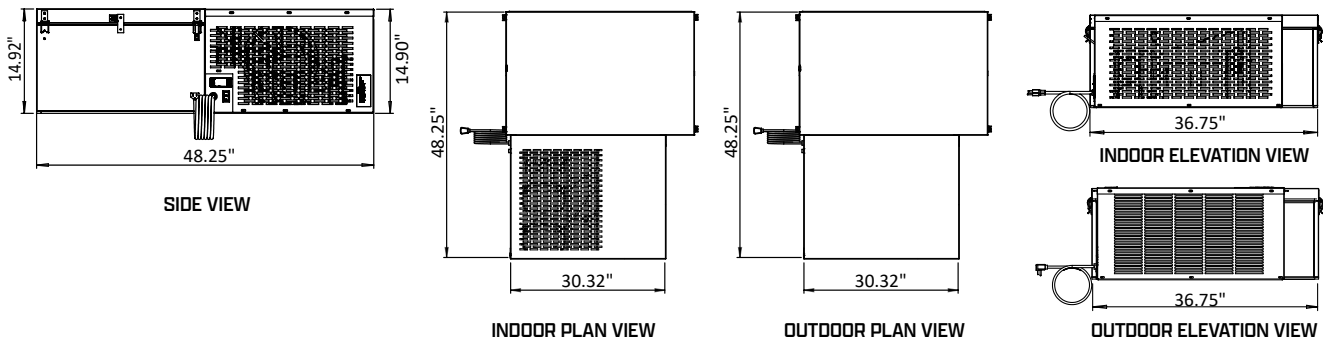
evaporator enclosure is constructed utilizing foamed-in-place polyurethane insulation and equipped with a removable, gasketed access cover. High efficiency EC evaporator fan motors circulate air throughout the walk-in.

Indoor Capsule Pak ECO models incorporate a condensate pan with wicking pads and forced air from the condenser fan to evaporate condensate. Outdoor models feature crankcase heaters for low ambient conditions.

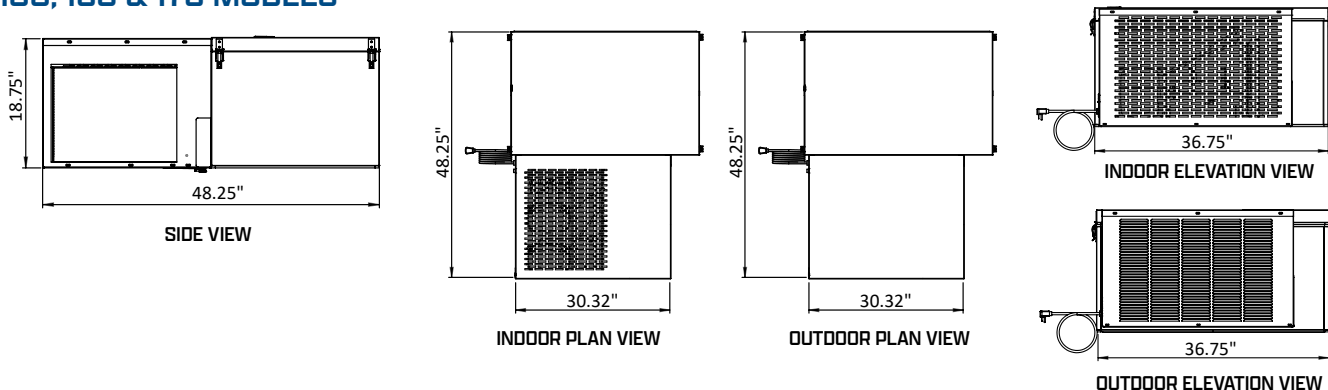
Note: Allow minimum of 4" clearance above and 24" on each side of the system for installation. Consideration should be given to accessibility for service and free condenser air flow. Consult factory with installation questions.

REFRIGERATION SYSTEM PHYSICAL SPECIFICATIONS

050 & 075 MODELS



100, 150 & 175 MODELS



NOTE:

- Consideration must be given to accessibility for service and free condenser air flow. Consult factory with installation questions.
- Proper condensing unit ventilation must be provided. The factory recommends 200cfm of fresh air in the surrounding area with ample clearance around the condensing unit.
- Subject to change without notice.



MATCHING REFRIGERATION SYSTEMS

KOLD LOCKER MODEL	SELF-CONTAINED ONE-PIECE CEILING MOUNT			
	-10°F, 90° AMBIENT		+37°F to +38°F, 90° AMBIENT	
	CAPSULE PAK ECO™ MODEL	BTUH*	CAPSULE PAK ECO™ MODEL	BTUH*
7' 4" HIGH LESS FLOOR - INDOOR ONLY				
KL7466	N/A	N/A	CPB050PC-S-0	4100
KL7468			CPB050PC-S-0	4100
KL74610			CPB075PC-S-0	6700
KL74612			CPB075PC-S-0	6700
KL74614			CPB075PC-S-0	6700
KL7488			CPB075PC-S-0	6700
KL74810			CPB075PC-S-0	6700
KL74812			CPB075PC-S-0	6700
KL74814			CPB075PC-S-0	6700
KL741010			CPB075PC-S-0	6700
KL741012			CPB100PC-S-0	8800
KL741014			CPB100PC-S-0	8800
7' 7" HIGH WITH FLOOR				
KL7766	CPF075PC-S-0	2900	CPB050PC-S-0	4100
KL7768	CPF100PC-S-0	3600	CPB050PC-S-0	4100
KL77610	CPF150PC-S-4	4400	CPB075PC-S-0	6700
KL77612	CPF150PC-S-4	4400	CPB075PC-S-0	6700
KL77614	CPF175PC-S-4	6350	CPB075PC-S-0	6700
KL7788	CPF150PC-S-4	4400	CPB075PC-S-0	6700
KL77810	CPF150PC-S-4	4400	CPB075PC-S-0	6700
KL77812	CPF175PC-S-4	6350	CPB075PC-S-0	6700
KL77814	CPF175PC-S-4	6350	CPB100PC-S-0	8800
KL771010	CPF175PC-S-4	6350	CPB100PC-S-0	8800
KL771012	CPF175PC-S-4	6350	CPB100PC-S-0	8800
KL771014	(2) CPF1750PC-S-4**	6350**	CPB100PC-S-0	8800
7' 7" HIGH WITH FLOOR OUTDOOR				
KOD7766	CPF075PC-E-0	2800	CPB050PC-E-0	4100
KOD7768	CPF100PC-E-0	3600	CPB050PC-E-0	4100
KOD77610	CPF100PC-E-0	3600	CPB075PC-E-0	6700
KOD77612	CPF150PC-E-4	4300	CPB100PC-E-0	8800
KOD77614	CPF175PC-E-4	6300	CPB100PC-E-0	8800
KOD7788	CPF175PC-E-4	6300	CPB075PC-E-0	6700
KOD77810	CPF175PC-E-4	6300	CPB075PC-E-0	6700
KOD77812	CPF175PC-E-4	6300	CPB100PC-E-0	8800
KOD77814	CPF175PC-E-4	6300	CPB100PC-E-0	8800
KOD771010	CPF175PC-E-4	6300	CPB100PC-E-0	8800
KOD771012	CPF175PC-E-4	6300	CPB100PC-E-0	8800
KOD771014	(2) CPF150PC-E-4 **	4300**	CPB100PC-E-0	8800

*BTUH calculated using 16 hour design runtimes on coolers and 20 hour design runtimes on freezers

**10 x 14 freezer models ship with dual Capsule Pak ECO systems. BTUH noted is per system.

REFRIGERATION SYSTEM TECHNICAL DATA

CAPSULE PAK ECO™ INDOOR REFRIGERATION SYSTEMS (CORD AND PLUG CONNECTED)

MODEL	REFRIGERANT	REFRIGERANT CHARGE (OZ)	ELECTRICAL	TOTAL SYSTEM AMPS	NEMA PLUG	AWEF	BTUH*	SHIP WT. (LB/KG)
CPB050PC-S-0	R290	5.25	115/60/1	6.9	5-15P	5.61	4100	192/87
CPB075PC-S-0		9.5**	115/60/1	11.4	5-20P	5.61	6700	214/97
CPB100PC-S-0		10.5***	115/60/1	15.3	5-20P	5.61	8800	257/117
CPF050PC-S-0		5.25	115/60/1	6.9	5-15P	1.96	1600	197/89
CPF075PC-S-0		9.5**	115/60/1	11.4	5-20P	2.07	2900	219/99
CPF100PC-S-0		10.5***	115/60/1	15.3	5-20P	2.14	3600	262/119
CPF150PC-S-4		10.5***	230/60/1	7.4	6-15P	2.21	4400	262/119
CPF175PC-S-4		10.5***	230/60/1	10.7	6-15P	2.38	6350	375/170

CAPSULE PAK ECO™ OUTDOOR REFRIGERATION SYSTEMS (CORD AND PLUG CONNECTED)

MODEL	REFRIGERANT	REFRIGERANT CHARGE (OZ)	ELECTRICAL	TOTAL SYSTEM AMPS	NEMA PLUG	AWEF	BTUH*	SHIP WT. (LB/KG)
CPB050PC-E-0	R290	5.25	115/60/1	6.9	5-15P	7.6	4100	206/93
CPB075PC-E-0		9.5**	115/60/1	11.4	5-20P	7.6	6700	228/103
CPB100PC-E-0		10.5***	115/60/1	15.3	5-20P	7.6	8800	271/123
CPF050PC-E-0		5.25	115/60/1	6.9	5-15P	2.84	1600	211/95
CPF075PC-E-0		9.5**	115/60/1	11.4	5-20P	2.91	2900	233/105
CPF100PC-E-0		10.5***	115/60/1	15.3	5-20P	2.96	3600	276/125
CPF150PC-E-4		10.5***	230/60/1	7.4	6-15P	3.01	4400	276/125
CPF175PC-E-4		10.5***	230/60/1	10.7	6-15P	3.12	6300	390/177

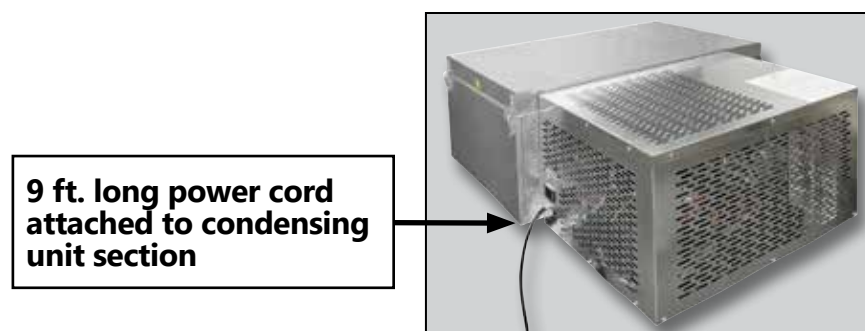
*BTUH calculated using 90°F ambient.

**Two compressors using 4.75 oz each.

***Two compressors using 5.25 oz each.

Note:

- Consult factory for application specifics
- All Capsule Pak ECO systems require a single power supply.



**KOLD LOCKER™**

WALK-IN COOLERS & FREEZERS WITH SELF-CONTAINED REFRIGERATION SYSTEMS

OPTIONAL CAPSULE PAK™ REMOTE SYSTEMS



Evaporator section
located on top of
walk-in.

Outdoor systems include ambient controls and weather-proof hoods with quick connects for simple field connections to pre-charged line lengths available in 5' increments up to 50' maximum. Wiring harnesses are also available and must be ordered by length (50' maximum).

Consult factory for application specifics, pricing, and ship date availabilities.

MODEL	REFRIGERANT	VOLTAGE	SYSTEM MCA	SYSTEM MAX. FUSE	AWEF	BTUH*	SHIP WT. (LB/KG)
COOLER MODELS							
CPB050JC-R-0-EV	R-449A	115/60/1	13.5	20	7.6	4394	270/122
CPB075JC-R-4-EV	R-449A	208-230/60/1	9.7	15	7.6	5729	285/129
CPB100JC-R-4-EV	R-449A	208-230/60/1	10.4	15	7.6	7300	285/129
FREEZER MODELS							
CPF060JC-R-4-EV	R-449A	208-230/60/1	8.9	15	2.9	2591	275/125
CPF075JC-R-4-EV	R-449A	208-230/60/1	9.7	15	2.93	3167	290/131
CPF100JC-R-4-EV	R-449A	208-230/60/1	11.2	15	2.94	3532	290/131
CPF150JC-R-4-EV	R-449A	208-230/60/1	17.1	20	3.03	4811	375/170
CPF200JC-R-4-EV	R-449A	208-230/60/1	17.6	30	3.13	6313	375/170

Note: Electrical specification intended to be single point connection (including electrical harness). All Capsule Pak remote systems require one power supply and include an electrical harness to connect the condensing unit and evaporator sections.

*BTUH calculated using 90°F ambient.

Optional Electric Condensate Vaporizer

Capsule Pak Remote Systems are available with an electric condensate vaporizer. This UL and C-UL approved product requires no drain lines on indoor applications, which makes installation fast and easy and allows equipment to be operational in a shorter time frame.



891 County Road U • Hudson, WI 54016
800-955-5253 • www.norlake.com

