

Cleveland

FLT0026

REVERSE OSMOSIS WATER TREATMENT SYSTEM

Project _____
Item _____
Quantity _____
FCSI Section 11400 _____
Approved _____
Date _____

High Efficiency Boilerless Steamchef™ Convection Steamers

Models

- FLT0026



Wall mount



Optional Floor Stand



16 Gallon atmospheric tank

Standard Features

- Leveraging proprietary technology, the FLT0026 system uses Reverse Osmosis (RO) to reduce Total Dissolved Solids (TDS); it provides up to 375 gal/day (1,419 L/day)* and includes a 16-gallon (60.6 L) atmospheric tank. Ideal for applications where RO is necessary to meet manufacturer's warranty requirements†.
- Meets combi oven and steamer equipment water quality standards; known to significantly reduce scale and corrosion problems due to high TDS, water hardness*, and chlorides‡
- 4CM cartridge provides optimal mineral content for proper function of conductivity sensors on steam equipment
- Sealed atmospheric storage tank provides compact capacity and electronic pump delivers optimized water to downstream equipment
- Compact design allows installation under counters and in tight spaces
- Pressure gauge allows monitoring of RO inlet pressure and prefilter condition
- Built-in bypass, sample port and flush valves speed up installation and cartridge replacement and optimal mineral content for steam equipment applications
- Proprietary Fibredyne™ II filtration media effectively inhibits growth of bacteria on the filter media that can decrease product life. Also can reduce sediment and chlorine to help protect the RO membrane*
- High flow 1/2" ID hose optimized water line to equipment
- Installation kit comes complete with tubing, fittings, and mounting hardware for installation
- High efficiency RO membrane saves up to two times more water than standard RO membranes‡
- Numerous patents pending on technology and other aspects of the product design filter reduces chloramine New manifold design provides fewer possible leak points.

Installation & Operating Tips

- Feed water connection to system should be COLD only. Tempered water up to 80° F (26.6°C) can be used.
- Do not exceed system specifications for temperature and pressure.
- Provide a dedicated feed water supply connection of at least 3/8" inner diameter.
- For use with steam generation only. Do not use for condensate or wash water.
- Allow 3" clearance below system for filter cartridge removal and replacement.
- Detailed, illustrated installation guide is included with each system.

KE004046-6 Rev C

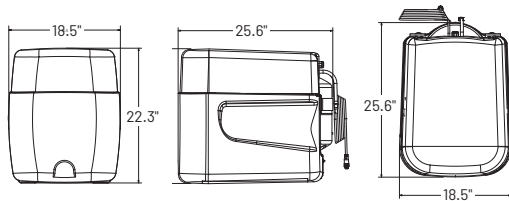
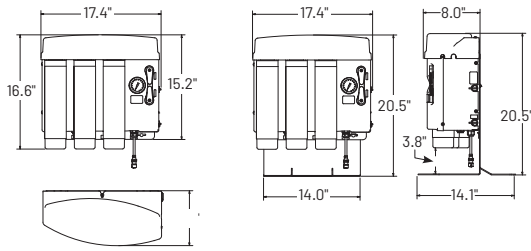
760 Beta Drive, Unit D
Mayfield Village, Ohio 44143

Tel 1.216.481.4900
Fax 1.216.481.3782
Email steam@clevelandrange.com

www.clevelandrange.com
Section 2, Page 9
04/2025

Timeless Quality, Trusted For Life®

Cleveland



16-gallon atmospheric tank

Specifications

- Overall Dimensions -** Processor 16.6" H x 17.4" W x 8.0" D (42.2 cm x 44.2 cm x 20.3 cm)
- Tank Dimensions & Capacity** 22.3" H x 18.5" W x 25.6" D (56.6 cm x 47.0 cm x 65 cm) 16 gallons (60.6 L)
- Connections** Inlet: 3/8" push-to-connect Outlet: 1/2" OD push-to-connect; 3/4" garden hose connection included
- Pressure Requirements** 50 – 100 psi (3.5 – 6.9 bar), non-shock
- Water Temperature** 40–100°F (4 – 38°C)
- Shipping Weight** 69.5 lbs (31.6 kgs)
- Electrical Connection** Grounded 115 VAC, 2 Amp
- Daily Production Rate** Up to 375 gpd (1,419 Lpd)* nominal at 77°F (25°C), 750 ppm NaCl, 60 psi (4.1 bar) feed water pressure*; production will vary based on water supply temperature and pressure
- Service Flow Rate** Dependent on water level up to 3.25 gpm (12.3 L) @ 50 psi (3.4 bar)

Feed Water Chemistry

Feed TDS	Up to 1000 ppm
Feed pH	5–10 units
Hardness*	12 grains or less
Free Chlorine	<3 mg/L
Iron	0.1 mg/L max
Turbidity	<1.0 NTU
Manganese	<0.05 mg/L max
Hydrogen Sulfide	0.00 mg/L
Silica	<20 ppm

WATER FILTERS GUIDELINES FOR CLEVELAND STEAMERS												
MODEL	INITIAL FILL AT START UP (Gallons)	MAXIMUM FLOW RATE *				MEETS WATER REQUIREMENTS Cleveland	Cartridges Cleveland	SIZING RECOMMENDATIONS				
		MAX GAL./MIN	MAX GAL./HOUR	MAX GAL./HOUR/P AN	MAX GAL./DAY (8 Hour Day)			DOES NOT MEET REQUIREMENTS - HIGH HARDNESS +170PPM, pH below 8.5 ph, Cleveland	DOES NOT MEET REQUIREMENTS - REVERSE OSMOSIS WITH MINERAL ADDITION Cleveland	SUGGESTED FILTER CHANGE FREQUENCY	RO PRODUCTION GPD OPTIMAL (77 F)	STORAGE TANK CAPACITY
STEAMCHEF SERIES (BOILERLESS)												
22CET3.1 - Energy Star	1.10	0.07	4.0	1.3	32.00	FLT0040	FLT0014 & FLT0018	FLT0043	FLT0031	ANNUAL	175	16
22CET6.1 - Energy Star	1.10	0.07	4.0	0.7	32.00	FLT0040	FLT0014 & FLT0018	FLT0043	FLT0031	ANNUAL	176	16
22CGT3.1 - Energy Star	1.10	0.07	4.0	1.3	32.00	FLT0040	FLT0014 & FLT0018	FLT0043	FLT0031	ANNUAL	177	16
22CGT6.1 - Energy Star	1.10	0.07	4.0	0.7	32.00	FLT0040	FLT0014 & FLT0018	FLT0043	FLT0031	ANNUAL	165	16
STEAMCRAFT-COUNTER TOP (GENERATORS)												
21CET8	2.80	0.057	3.42	1.1	27.36	FLT0040	FLT0014 & FLT0018	FLT0043	FLT0031	ANNUAL	175	16
21CET16	3.80	0.113	6.78	1.4	54.24	FLT0040	FLT0014 & FLT0018	FLT0043	FLT0026	ANNUAL	175	16
21CGA5	4.00	0.113	6.78	1.4	54.24	FLT0040	FLT0014 & FLT0018	FLT0043	FLT0026	ANNUAL	175	16
10 PAN MODELS (GENERATORS)												
24CGA10	7.90	0.185	11.10	1.1	88.80	FLT0040	FLT0014 & FLT0018	FLT0043	FLT0027	6 MONTHS	350	50
24CGA10.2	3.30	0.194	11.64	2.3	93.12	FLT0040	FLT0014 & FLT0018	FLT0043	FLT0027	6 MONTHS	350	50
24CGA10.2ES Energy Star	3.30	0.132	7.90	1.6	63.20	FLT0040	FLT0014 & FLT0018	FLT0043	FLT0026	6 MONTHS	350	16
24CEA10	3.80	0.113	13.56	2.7	108.48	FLT0040	FLT0014 & FLT0018	FLT0043	FLT0027	6 MONTHS	350	50
24CGP10	16.00	0.360	21.60	2.2	172.80	FLT0040	FLT0014 & FLT0018	FLT0043	FLT0012	3 MONTHS	1400	50
CLASSIC CONVECTION SERIES (BOILER BASE)												
200,000 BTU Boilers (24CGM200)	8.00	0.2500	15.00	2.5	120.00	FLT0040	FLT0014 & FLT0018	FLT0043	FLT0012	6 MONTHS	1400	50
300,000 BTU Boilers (36CGM300, 36CGM16300)	12.00	0.3600	21.60	2.2	172.80	FLT0040	FLT0014 & FLT0018	FLT0043	FLT0012	3 MONTHS	1400	50
24 kW Boilers (24CEM24)	9.00	0.1600	9.60	1.0	76.80	FLT0040	FLT0014 & FLT0018	FLT0043	FLT0027	6 MONTHS	350	50
36kW Boilers (24CEM36)	9.00	0.2400	14.40	1.4	115.20	FLT0040	FLT0014 & FLT0018	FLT0043	FLT0012	6 MONTHS	1400	50
48 kW Boilers (24CEM48)	9.00	0.3000	18.00	1.8	144.00	FLT0040	FLT0014 & FLT0018	FLT0043	FLT0012	3 MONTHS	1400	50
CLASSIC PRESSURE SERIES (BOILER BASE)												
24 kW Boilers PEM24	9.00	0.1600	9.60	1.0	76.80	FLT0040	FLT0014 & FLT0018	FLT0043	FLT0027	6 MONTHS	350	50
36kW Boilers PEM36	9.00	0.2400	14.40	1.4	115.20	FLT0040	FLT0014 & FLT0018	FLT0043	FLT0012	6 MONTHS	1400	50
48 kW Boilers PEM48	9.00	0.3000	18.00	1.8	144.00	FLT0040	FLT0014 & FLT0018	FLT0043	FLT0012	3 MONTHS	1400	50

* Max Flow Rate is when steamer is cooking continuously. Idle mode uses significantly less water.



System is Tested and Certified by NSF International against NSF/ANSI 58 and CSA B483.1 for the reduction of Total Dissolved Solids (TDS).



Water Treatment Appliance - E359339

NOTES:

Cleveland Range reserves right of design improvement or modification, as warranted. Many regional, state and local codes exist and it is the responsibility of the owner and installer to comply with the codes. Cleveland Range equipment is built to comply with applicable standards for manufacturers. Included among those approval agencies are U.L./NSF#4 and CSA (AGA, CGA).

(NOT TO SCALE)

760 Beta Drive, Unit D
Mayfield Village, Ohio 44143

Tel 1.216.481.4900
Fax 1.216.481.3782
Email steam@clevelandrange.com

www.clevelandrange.com
Section 2, Page 10
04 / 2025

Timeless Quality, Trusted For Life®

KE004046-6